

TS-234
Rev. 0-02-06-05
Type 40 Flowmeters
1¼" & 1½"



Type 40 Flowmeters

1¼" Type 40

1½" Type 40



RP150100RGAO

1½" Type 40 with 800 Series Register

SPECIFICATIONS

DESCRIPTION

Because of the value and volume of product metered in any bulk plant or truck operation, errors are costly. For this reason, accuracy is the most important criteria in flowmeter selection.

Actaris Neptune's 1¼" and 1½" Refined Fuel Flowmeters provide accurate and convenient measurement of refined petroleum products for cost control, loss prevention and invoicing. These rugged positive displacement flowmeters incorporate Actaris Neptune's refined fuel measuring chamber which has only one moving part . . . the oscillating piston.

Installation is easy, calibration is quick, cleaning is simple and maintenance costs are low. Actaris Neptune's Refined Fuel Flowmeters give you many outstanding features, but none more important than sustained accuracy year after year.

Flow Rate

1¼": 5 to 30 gpm (19 to 114 lpm).

1½": 12 to 60 gpm (45 to 227 lpm).

Temperature

140°F (60°C) maximum.

Operating Pressure

125 psi (9 bar) maximum.

Direction Of Flow

The user may set the register in the desired position by following directions furnished with the flowmeter. Direction of flow in flowmeters will be from left to right unless otherwise specified.

Connections

1¼" Type 40: Flanged. Companion flanges furnished tapped for 1½" standard pipe unless 1¼" tapping is ordered.

1½" Type 40: Non-auto stop — flanged. Companion flanges tapped for 1½" standard pipe. Auto-stop — inlet flanged, with companion flange tapped for 1½" standard pipe. Valve outlet tapped for 2" standard pipe.

Units of Measure

Calibration is in U.S. gallons, but imperial gallons, litres, and other unit indications can be provided on order where the mechanism permits.

Reset Wheel Capacity

9,999.9 gallons on direct Reading Registers.

Preset Setting Capacity

9,999 gallons on Models 832 and 834.

Printing Wheel Capacity

9,999.9 gallons Models 833 and 834.

Totalizer Capacity

9,999,999 gallons — standard.

Materials

Casings — non-ferrous. Interior mechanism — corrosion-resistant metals.

Housing — Aluminum

Measuring Chamber — Bronze

Piston — Aluminum

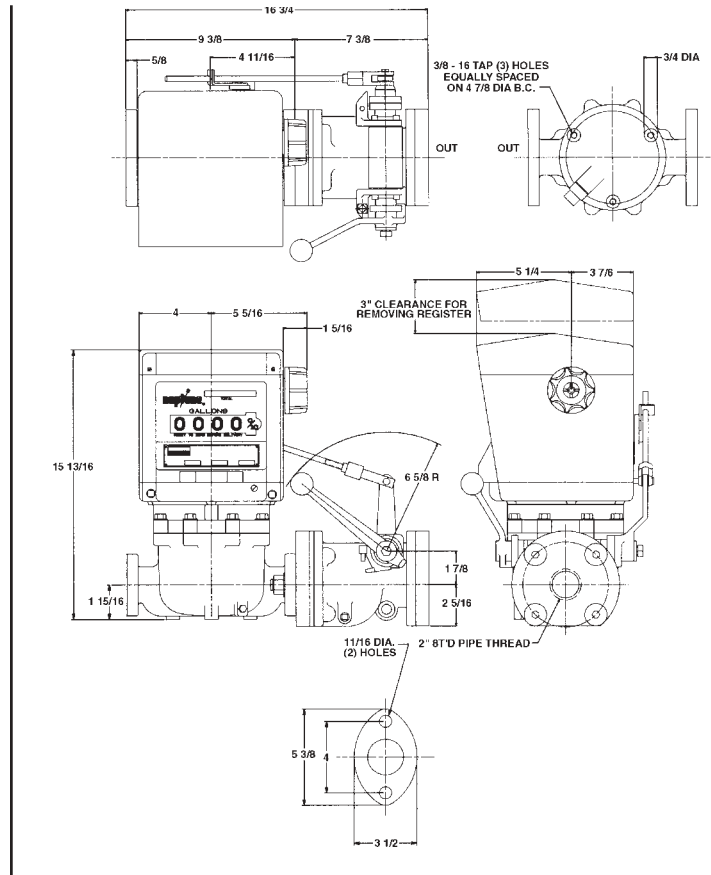
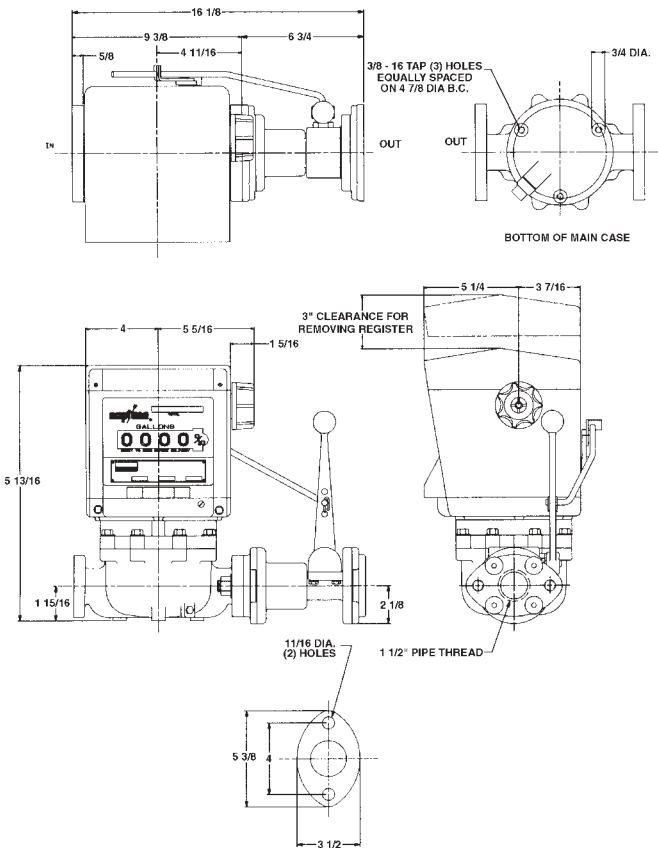
Dynamic Seals — Fluorocarbon

Static Seals — Nitrile

ACCURACY

		1 1/4"				Type 40 Flowmeter				1 1/2"					
Weight Lbs. (Kgs.)	Dimensions — Inches				Register Model No.	Type of Register	Dimensions — Inches				Weight Lbs. (Kgs.)				
	Length	Width	Height	Part No.			Length	Width	Height	Part No.					
48 (21)	15 5/32	9 15/16	15 1/16	RP125100RGG5	834	Direct Reading Reset Counter with Single-Trip Preset, "Zero Start" Printer and Totalizer	16 9/16	9 15/16	15 3/4	RP150100RGG5	66 (30)				
44 (20)	15 5/32	9 15/16	15 1/16	RP125100RGS5	832	Direct Reading Reset Counter Single-Trip Preset and Totalizer	16 9/16	9 15/16	15 3/4	RP150100RGS5	62 (28)				
36 (16)	9 3/8	8 11/16	15 1/16	RP125100RGF0	833	Direct Reading Reset Counter with "Zero Start" Printer and Totalizer	9 3/8	9 15/16	15 3/4	RP150100RGF0	39 (18)				
32 (15)	9 3/8	8 11/16	15 1/16	RP125100RGA0	831	Direct Reading Reset Counter and Totalizer	9 3/8	9 15/16	15 3/4	RP150100RGA0	35 (16)				

DIMENSIONS (Inches)



U.S.A./International
 1310 Emerald Road
 Greenwood, SC 29648-8800
 Tel.: Toll-Free (800) 833-3357
 (864) 223-1212
 Fax: (864) 223-0341

© 2002 Actaris Neptune Liquid Measurement Division 500 06/02

Specifications subject to change without prior notification.

Specify Genuine Schlumberger Replacement Parts

